



Prospect
Park
Alliance
Celebrate



Directions

Lefferts Historic House is located at the Children's Corner, just inside the Willink entrance to the Park, at Ocean and Flatbush Avenues and Empire Boulevard.

By Public Transportation:

- Q, S, or B Train to Prospect Park station.
- B-16 Bus to Ocean Ave. and Empire Blvd.
- B-41 Bus to Flatbush Ave. and Empire Blvd.
- B-43 Bus to Ocean Ave. and Empire Blvd.
- B-48 Bus to Flatbush Ave. and Empire Blvd.

By Car:

From Manhattan and Brooklyn Bridges: Take Flatbush Avenue to Grand Army Plaza, continue on Flatbush, make right on Ocean Avenue, right on Parkside Avenue.

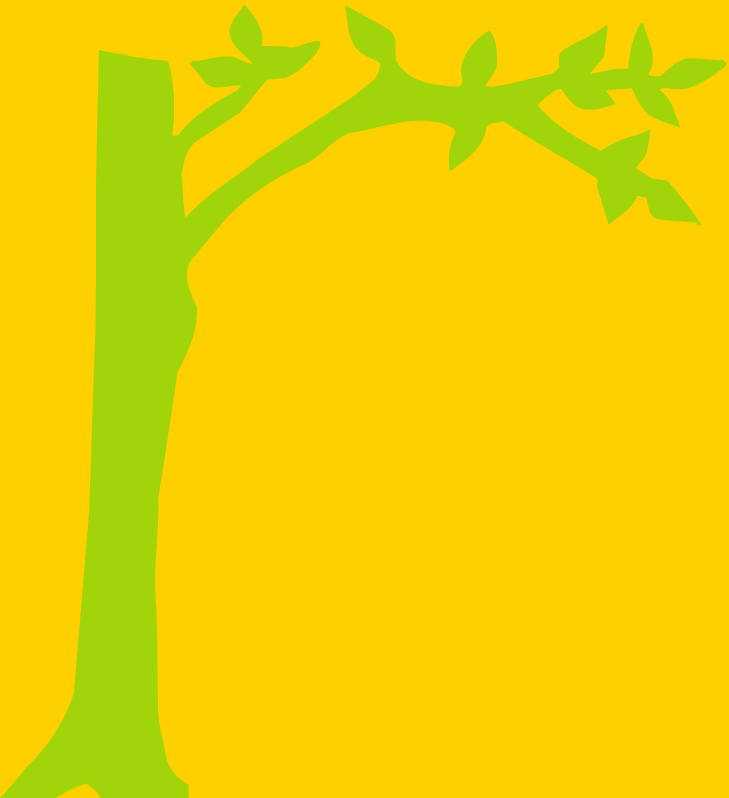
From BQE or Brooklyn Battery Tunnel: To Prospect Expressway, Fort Hamilton Parkway exit. Proceed two blocks and make left on Caton Avenue. Make left on Coney Island Avenue to Park Circle.

Street parking is available on Parkside Avenue.

For a map, **visit www.prospectpark.org**

It's a birthday party
at Lefferts





You're invited to

_____ 's party

Date _____

Time _____

RSVP _____

at Lefferts Historic House.