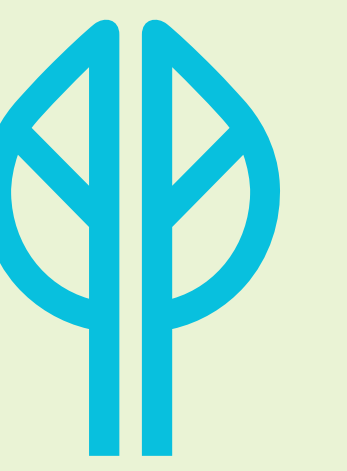


# Prospect Park Vale Restoration



## Exciting improvements are coming to the northeast section of Prospect Park! Please share your ideas to help inform the design.

The Vale is the 27 acre area of the park's northeast corner which is an important woodland area, and provides patrons with access to the Long Meadow and the Park's Children's Corner from our new Flatbush Avenue entrances, as well as from Grand Army Plaza.

Prospect Park Alliance has already completed a significant restoration of the area's woodlands, which were heavily damaged by severe storms, as well as restored the area's pathways, lighting and the new Flatbush entrances. In 2021, the city allocated \$40 million in capital funding to continue to enhance the visitor experience and natural areas, and bring much-needed new amenities such as bathrooms and community space to benefit all park users.

**Building on community engagement that began in 2017, Prospect Park Alliance is seeking community members' input to help shape the uses and character of the restored area. Your input will directly impact the Vale Restoration!**

## Process

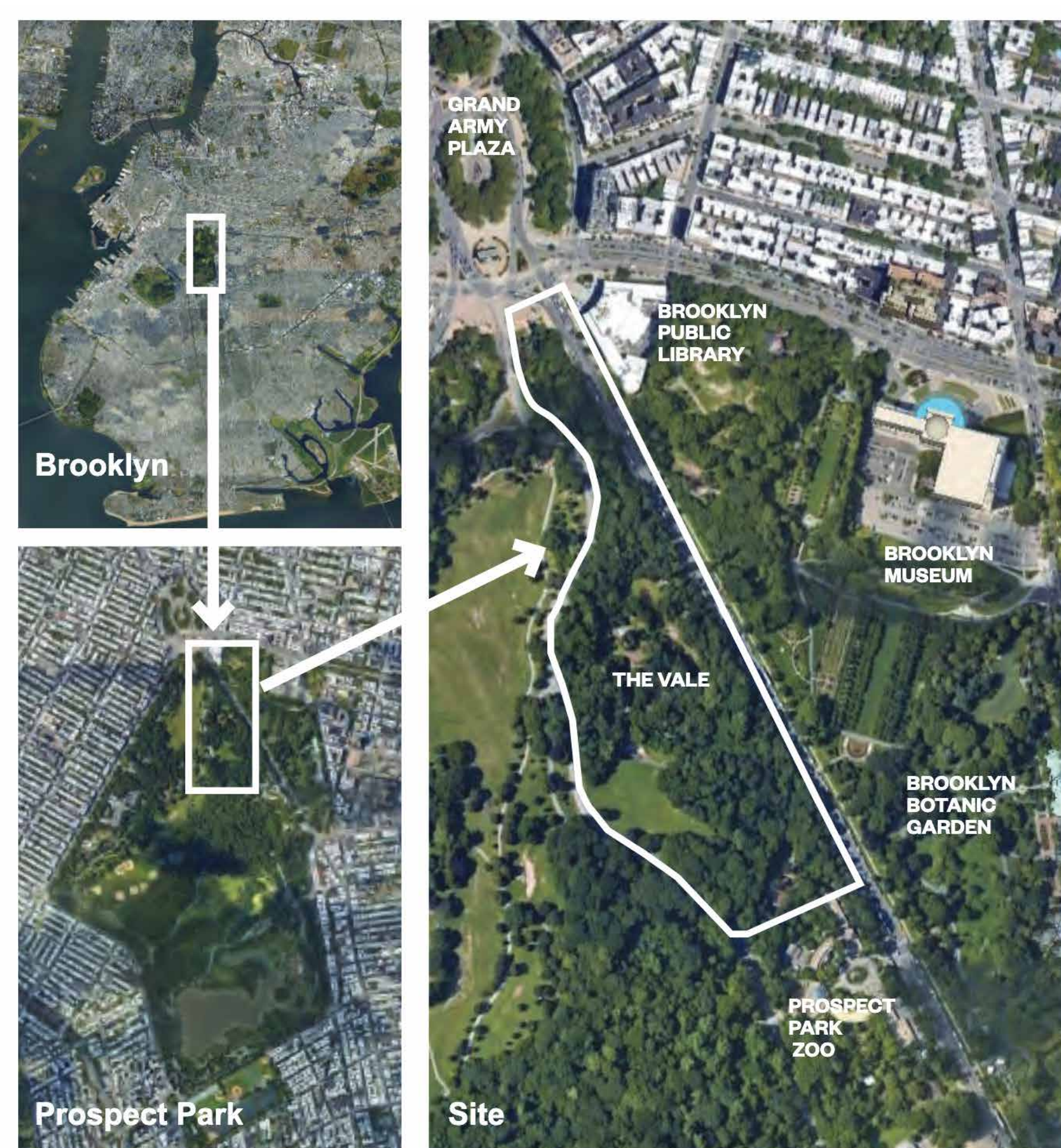
This project has been many years in the making, it began back in 2013 with initial site planning and analysis. In 2017-18, as we were making related improvements in the area, we also conducted an extensive community engagement process. Now that the City has allocated funding for this project, we are moving into another exciting phase of this project on the timeline below.

## Timeline

2013	2014	2015	2016	2017	2018	2019	2020	2021	2022	2023	2024	2025	2026
Site Planning & Analysis				Community Outreach			Completed Improvements			Current Improvements		Vale Construction	
Review of area for site planning and future restoration plans				Engaged 2,000+ community residents to create vision for the Vale			Vale Woodlands, Flatbush Perimeter + Entrances, Endale Arch, New Lighting + Pathways			Vale Design + Procurement		Vale Restoration + Opening	
										Grand Army Plaza Arch + Berms Restoration			

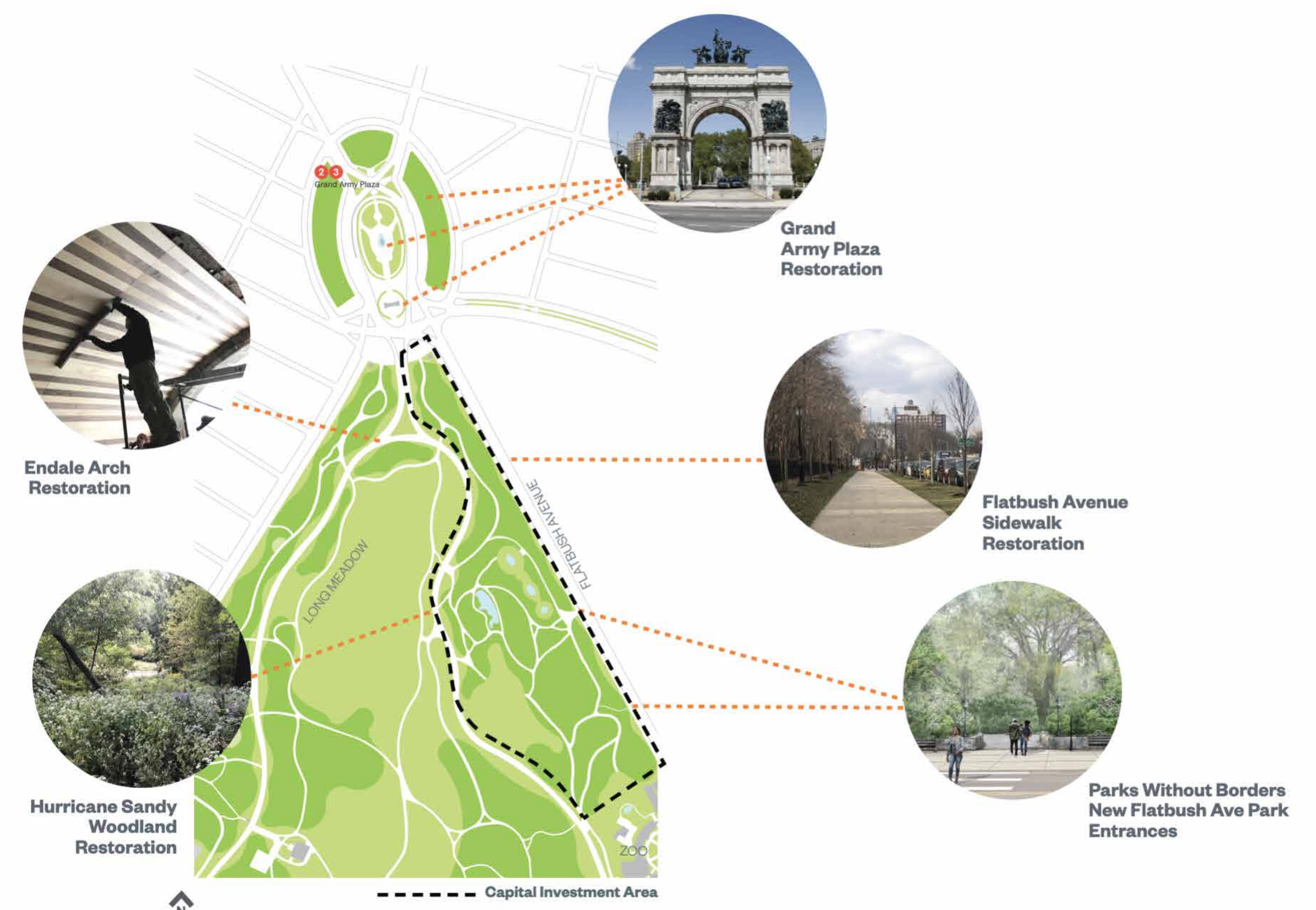
## Context

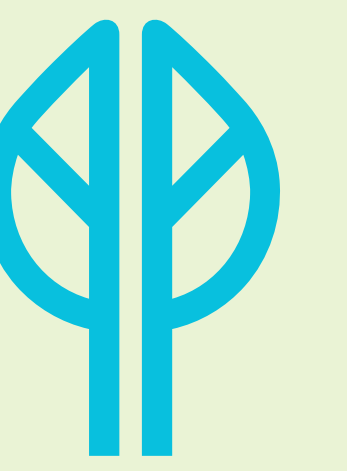
### About the Vale



- 27 acres located in the park's northeast corner
- Gateway to the park for neighborhoods of Crown Heights, Prospect Heights, Bedford-Stuyvesant and Brownsville
- Woodland area with access to Long Meadow, Children's Corner and Flatbush Avenue + Grand Army Plaza

### Recent and Upcoming Vale Improvements





## In 2017, Prospect Park Alliance conducted an intensive community outreach initiative, Reimagine Prospect Park, to create a new vision for the Vale.

We engaged over 2,000 community members to gather community input on the vision for restoration of this landscape. Many were conducted both inside and outside the park to capture feedback from a wide variety of park users.

### Community Outreach

- 3,035 Ideas Generated
- 2,070 Community Members Engaged
- 1,590 Survey Responses
- 40 outreach events: focus groups, workshops, open houses, stakeholder meetings, tabling and canvassing

This feedback has guided the Alliance's initial design concepts for the area. We are excited to gather your input for the next iteration of the design.

### Community Feedback

#### Preserve + Enhance:

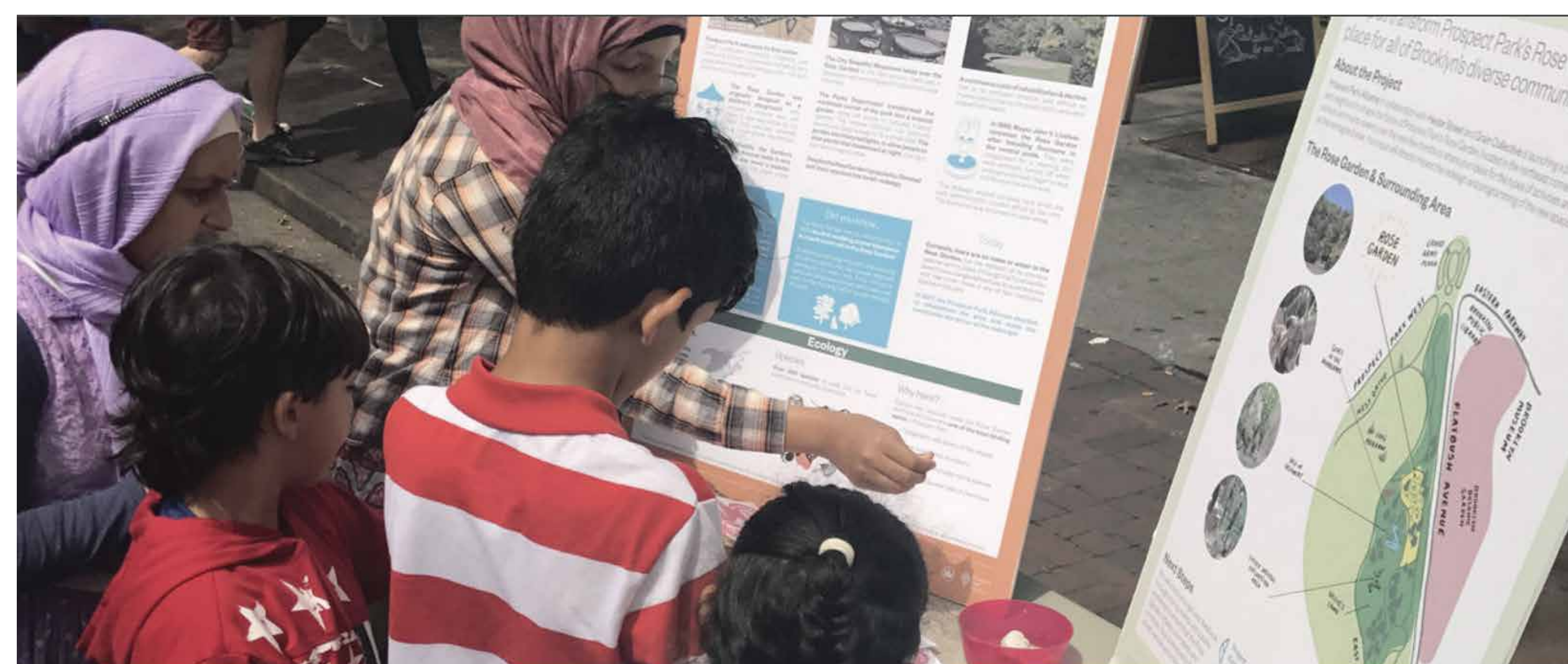
Strengthen and elevate the site as a restorative, nature-centered space

#### Intergenerational Activities + Gatherings:

bring community together through arts & culture + nature appreciation

#### Amenities + Access:

Add amenities that will make the space more functional, comfortable and welcoming



### Design Considerations

The following are the key design considerations for the Vale restoration and enhancement

#### Community Feedback

- Make certain the design reflects the feedback from 2017-18 outreach

#### Preservation and Restoration

- Preserve the woodland landscape
- Restore historical details of the Children's Pool (lower Vale)

#### Site features

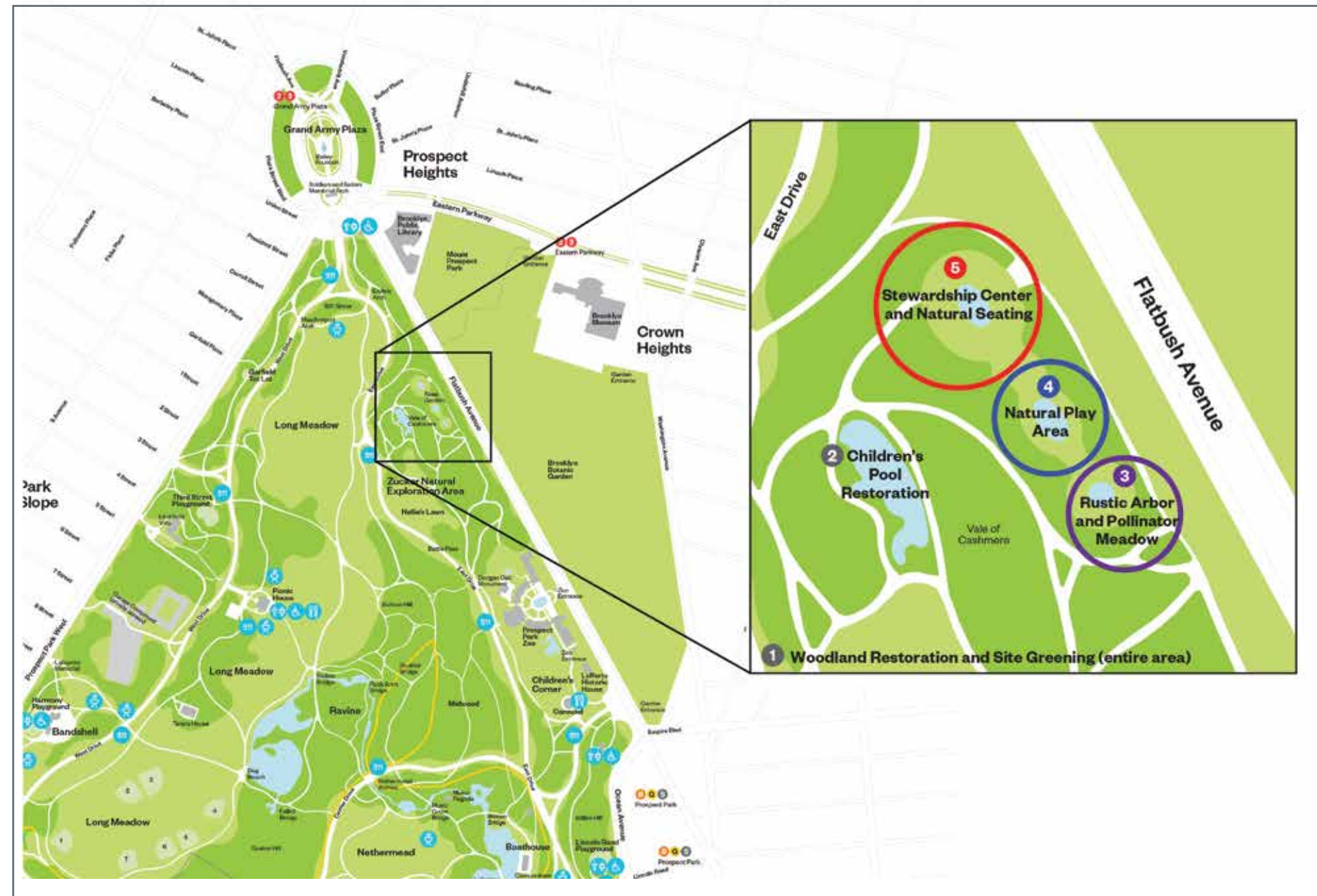
- Complement the site's unique topography

#### Overall Park Considerations

- Improve Access
- Provide Restrooms
- Make More Welcoming



## There are five main components to the Vale Restoration:



### 1. Woodland Restoration and Site Greening

Woodland restoration in this area will create an ecological corridor from the southwest to northeast corner of the park, enhancing an important migratory route for birds. In addition, the empty concrete pools will be removed and replaced with natural materials that will also allow for greater stormwater capture.

### 2. Restoration of Children's Pool

At the historic Children's Pool we will perform a traditional historic preservation, while enhancing its role as an important wildlife habitat. We will restore historic details, such as the pool walls, piers and balustrades. We will also enhance wildlife habitat by improving the native plant ecosystem, add bird-friendly water features and explore adding a stormwater capture system to save water use.

### 3. Rustic Arbor and Pollinator Meadow

Near the new entrance on Flatbush Avenue, an arbor and pollinator meadow will provide opportunities for enjoying nature and quiet relaxation. Plantings will provide habitat for pollinators such as bees, butterflies, beetles, and birds.

### 5. Stewardship Center and Natural Seating

This area will include a small, indoor/outdoor space with restrooms, as well as a natural seating area. The Stewardship Center will be bi-level and built into the hillside so it is accessible from both the Flatbush Entrance/Upper Vale as well as the East Drive and Long Meadow. The structure will be designed to be as environmentally friendly as possible and built to the LEED Gold standard. It will feature natural materials, composting toilets and in response to community feedback, will include a small community space for community meetings, workshops, classes and gatherings.

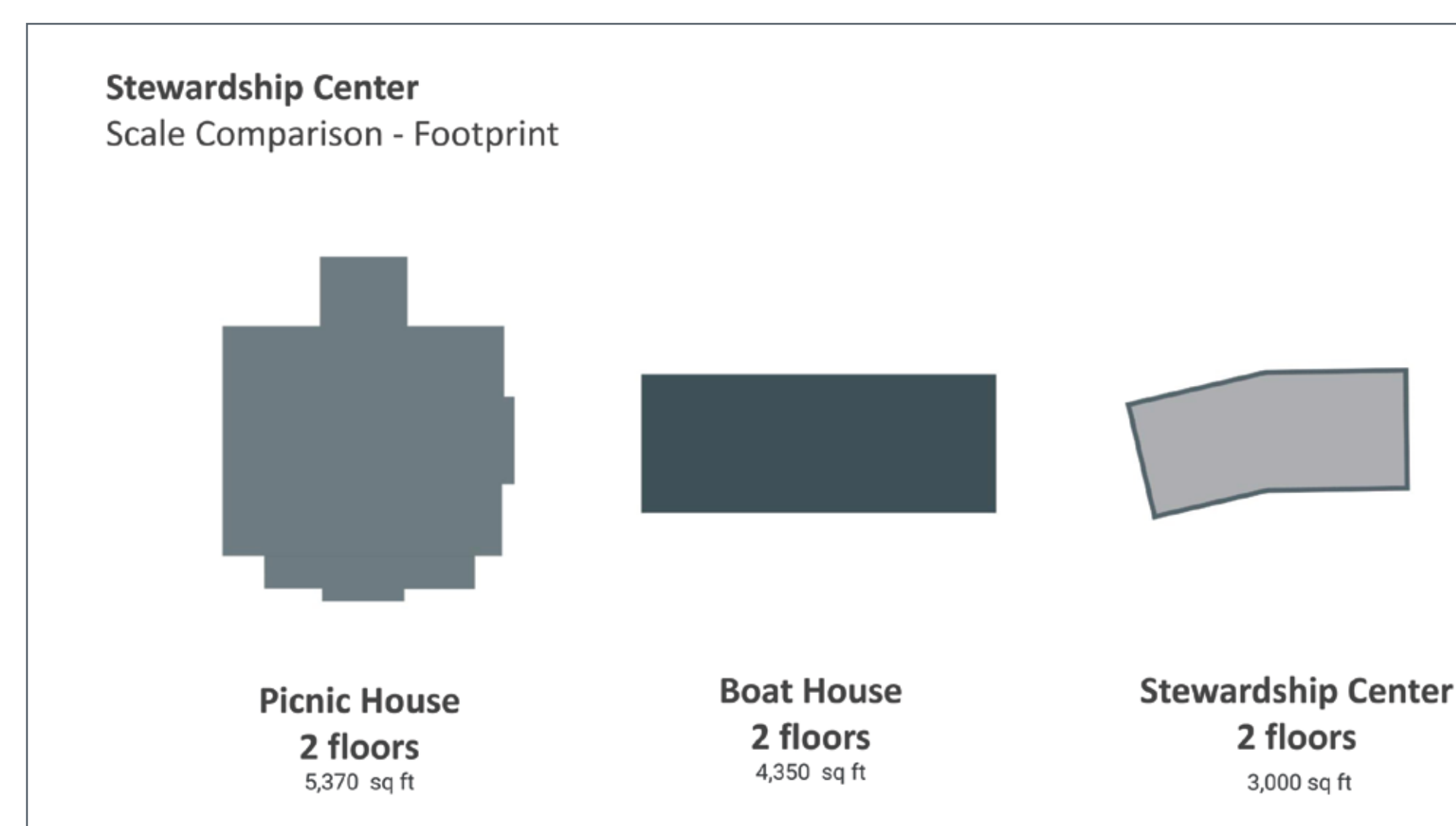
Prospect Park Alliance is mindful of the ecological sensitivity of this space. Intentionally, the Center will be one of the smallest buildings in the Park and will be designed to sit within the landscape so as not to overwhelm the natural beauty of the space.

### 4. A Natural Play Area

A play area for children and families will feature natural materials that encourage open-ended use and spark creativity, experimentation, risk-taking and imaginative play. Play elements will be incorporated into the landscape in a manner that will not impact sensitive wildlife habitat.



Design Concept for Visioning Purposes Only



## Give us your Input !

We want to hear from you! Please let us know what you think of these initial design concepts and also your ideas for the restored spaces. Fill in a paper survey or scan the code to take an online survey.



## Next Steps

We are gathering input from community members in three locations and will be hosting small focus groups in April and May. We will share a report back of all the input we have received in the late Spring/Early Summer. Another public review will be held in Fall 2022.

**March/April 2022** - Community Traveling Exhibit

**April 2022** - Small Focus Groups

**May 2022** - Community Engagement Report Back

**Fall 2022** - Community Meeting: Public Design Review"

## Visit [prospectpark.org/vale](https://prospectpark.org/vale) for more information and to keep in touch!

Prospect Park Alliance is the non-profit that cares for Prospect Park, Brooklyn's Backyard, for the diverse communities that call Brooklyn home, providing critical staff and resources that keep the park green and vibrant.